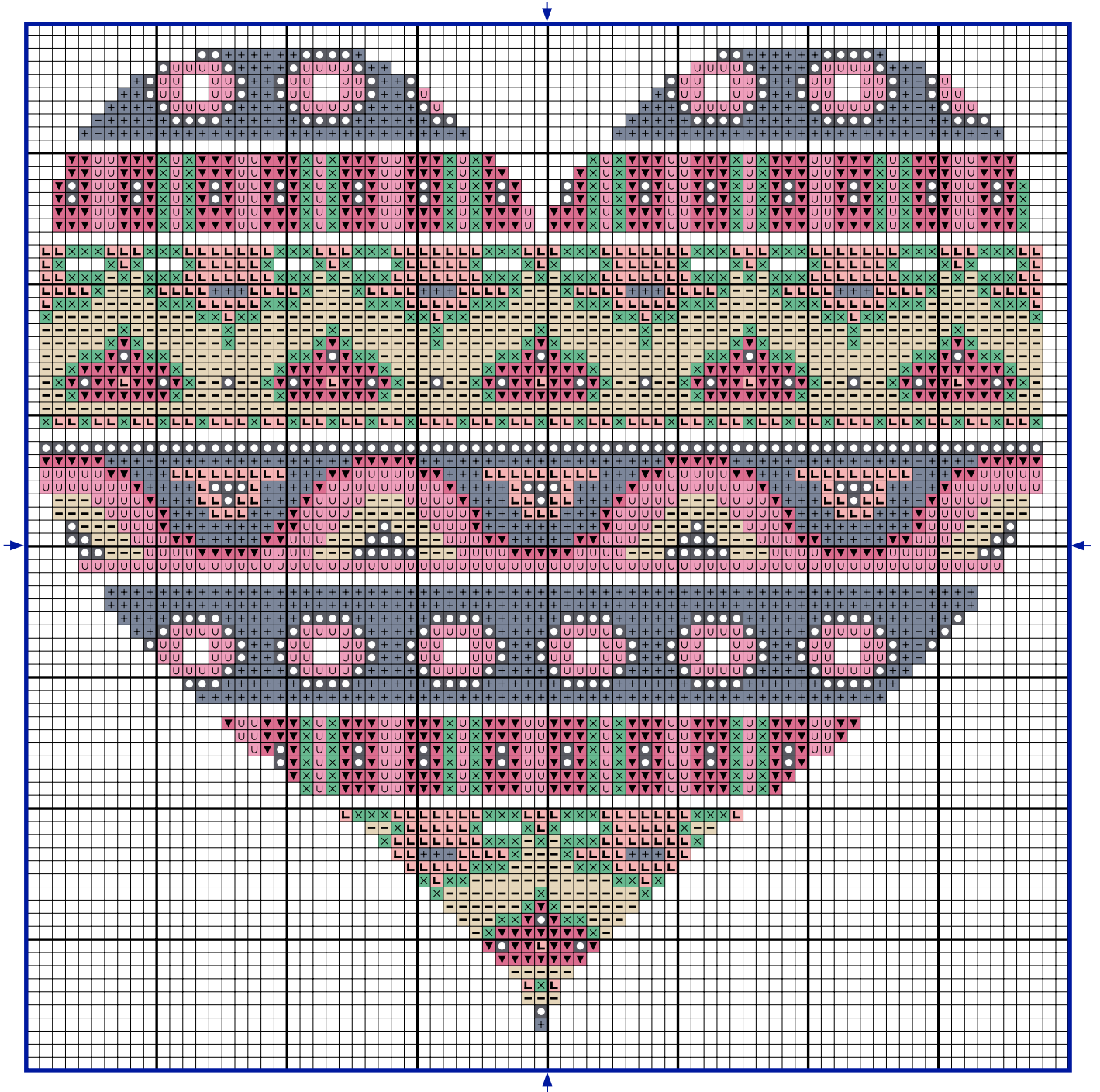


HEART CŒUR

COLOURED CROSS STITCH CHART WITH BACKSTITCH
DIAGRAMME POINT DE CROIX EN COULEURS AVEC POINT ARRIÈRE

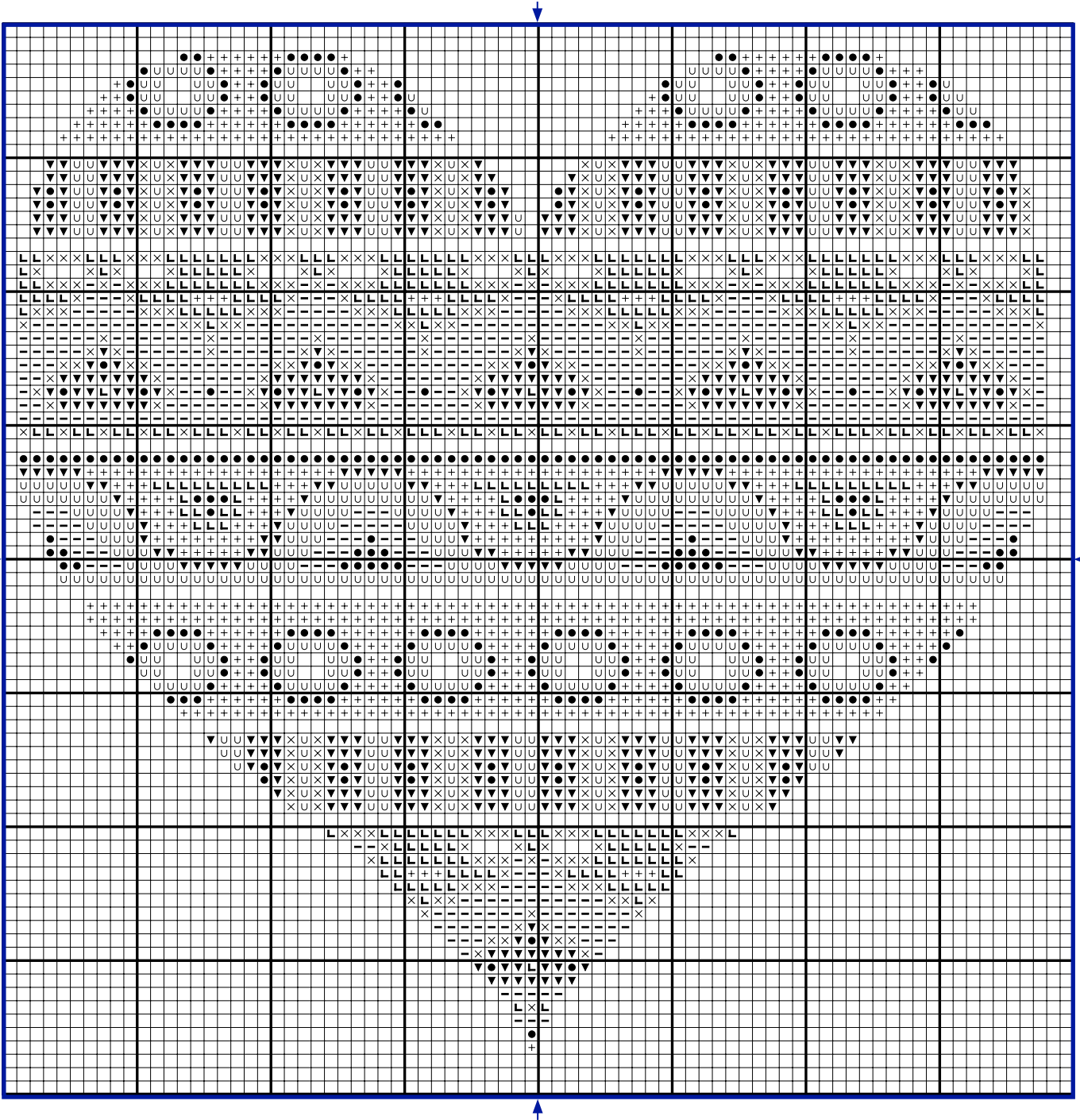


DMC LIBRARY - BIBLIOTHÈQUE DMC

DMC LIBRARY - BIBLIOTHÈQUE DMC

HEART CŒUR

CROSS STITCH CHART WITH BACKSTITCH
DIAGRAMME POINT DE CROIX AVEC POINT ARRIÈRE



HEART CŒUR

GETTING STARTED - COMMENCER

TOOL KIT / FOURNITURES

DMC MOULINÉ SPECIAL THREAD ART. 117 MC / MOULINÉ SPECIAL DMC
CROSS STITCH FABRIC / AIDA / TOILE AIDA
CROSS STITCH NEEDLE / AIGUILLE
EMBROIDERY HOOP (OPTIONAL) / TAMBOUR (OPTIONNEL)
SCISSORS / CISEAUX

DESIGN SIZE / DIMENSIONS DESSIN
14 X 13,6 CM / 5,51 " X 5,36 "

THE SIZE OF YOUR DESIGN DEPENDS ON THE CROSS STITCH FABRIC YOU CHOOSE. THE HIGHER THE FABRIC'S "COUNT" (IE NUMBER OF CROSS STITCHES PER INCH), THE SMALLER THE STITCHES AND THEREFORE YOUR DESIGN. WE RECOMMEND BEGINNERS START WITH **14** COUNT AIDA (THE MOST COMMON CROSS STITCH FABRIC), WHICH IS WHAT WE HAVE BASED OUR DESIGN SIZE ON.

LA TAILLE DE VOTRE DESSIN DÉPEND DE LA TOILE POINT DE CROIX QUE VOUS CHOISISSEZ.

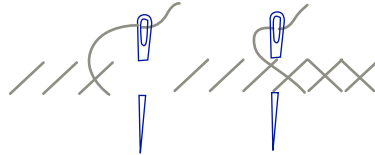
PLUS LE NOMBRE DE POINT DE CROIX PAR CENTIMÈTRE EST ÉLEVÉ, PLUS LES POINTS ET LA BRODERIE SERONT PETITS. NOUS RECOMMANDONS AUX DÉBUTANTS DE COMMENCER EN UTILISANT UNE TOILE AIDA **5,5** PTS/CM (LA TOILE DE POINT DE CROIX LA PLUS UTILISÉE), SUR LAQUELLE NOUS AVONS BASÉ NOTRE DESSIN.

HEART CŒUR

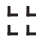

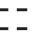





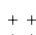





GETTING STARTED - COMMENCER

STITCHES AND COLOURS YOU'LL USE LÉGENDE : POINTS ET COULEURS

CROSS STITCH POINT DE CROIX



DMC MOULINÉ SPECIAL THREAD ART. 117 MC / MOULINÉ SPECIAL DMC

SYMBOL SYMBOLE	COLOUR COULEUR	N° SKEINS* N° D'ÉCHEVETTES*	SYMBOL SYMBOLE	COLOUR COULEUR	N° SKEINS* N° D'ÉCHEVETTES*	SYMBOL SYMBOLE	COLOUR COULEUR	N° SKEINS* N° D'ÉCHEVETTES*
 	3713	x 1	 	ecru	x 1			
 	563	x 1	 	3688	x 1			
 	318	x 1	 	3689	x 1			
 	317	x 1						

* Based on stitching with the number of strands shown above, onto 14 count Aida. / * Basé sur le nombre de brins préconisé au-dessus, sur une toile Aida 5,5 pts/cm.